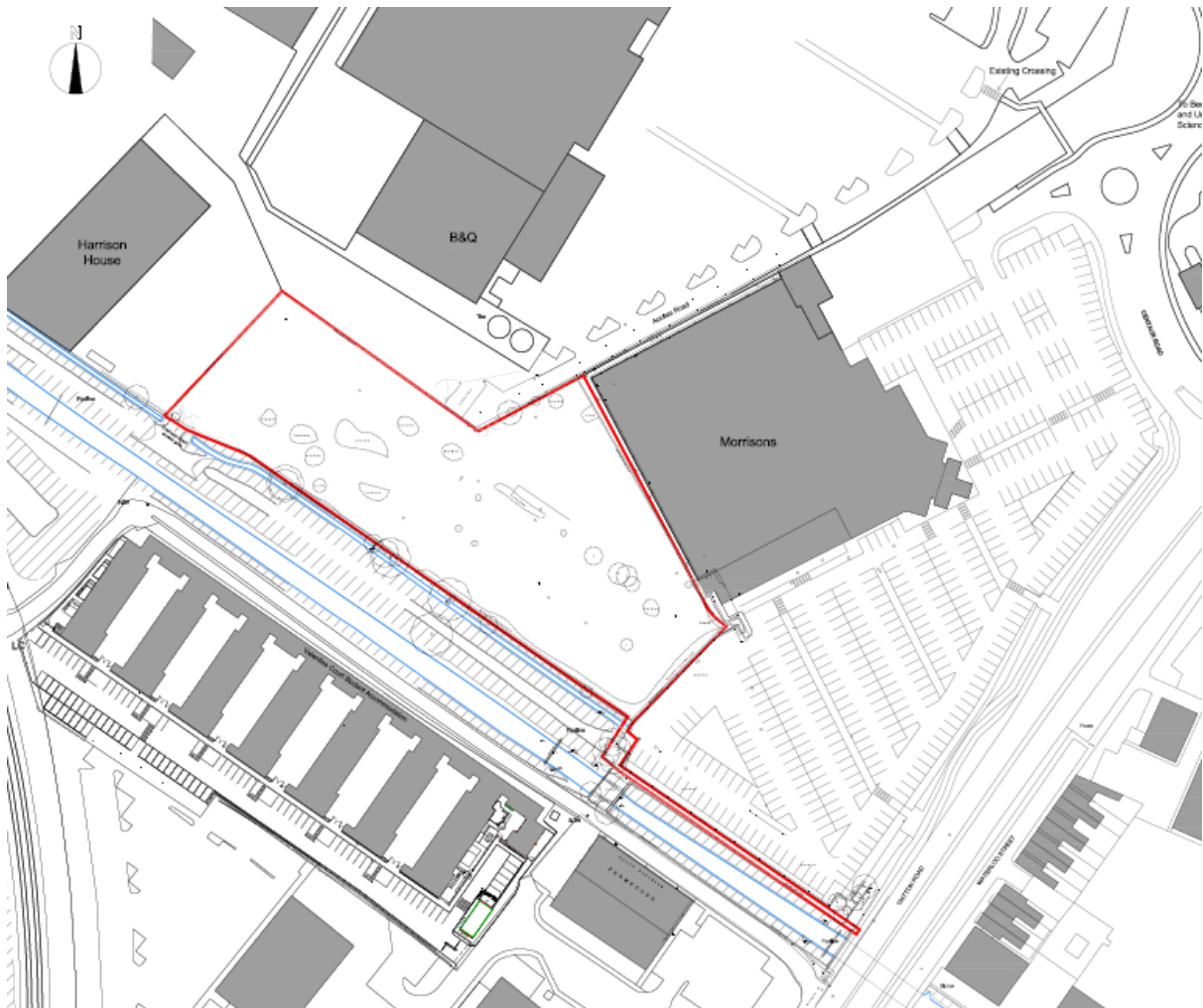
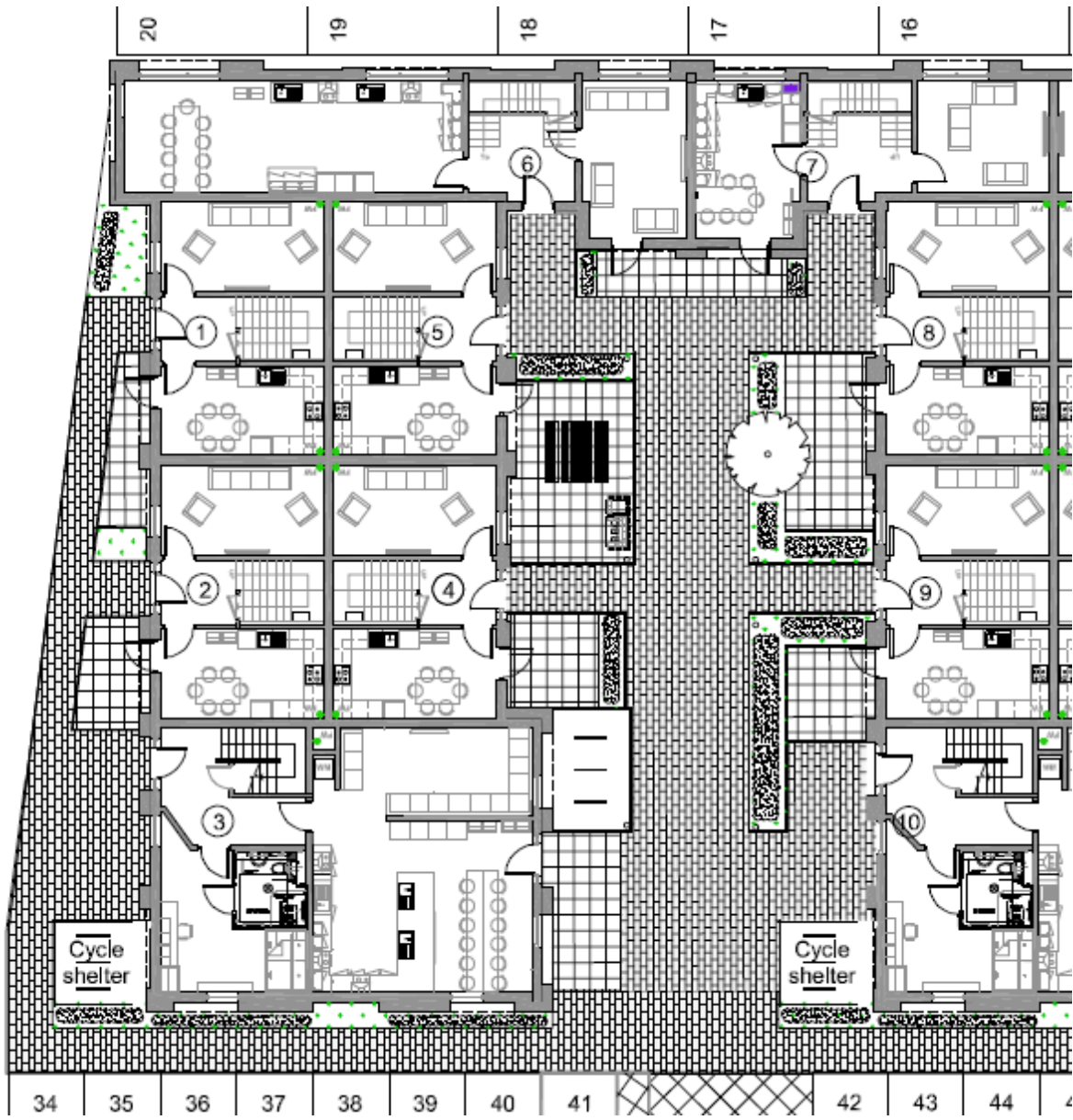


Site of former Windmill Pine- plans and photos

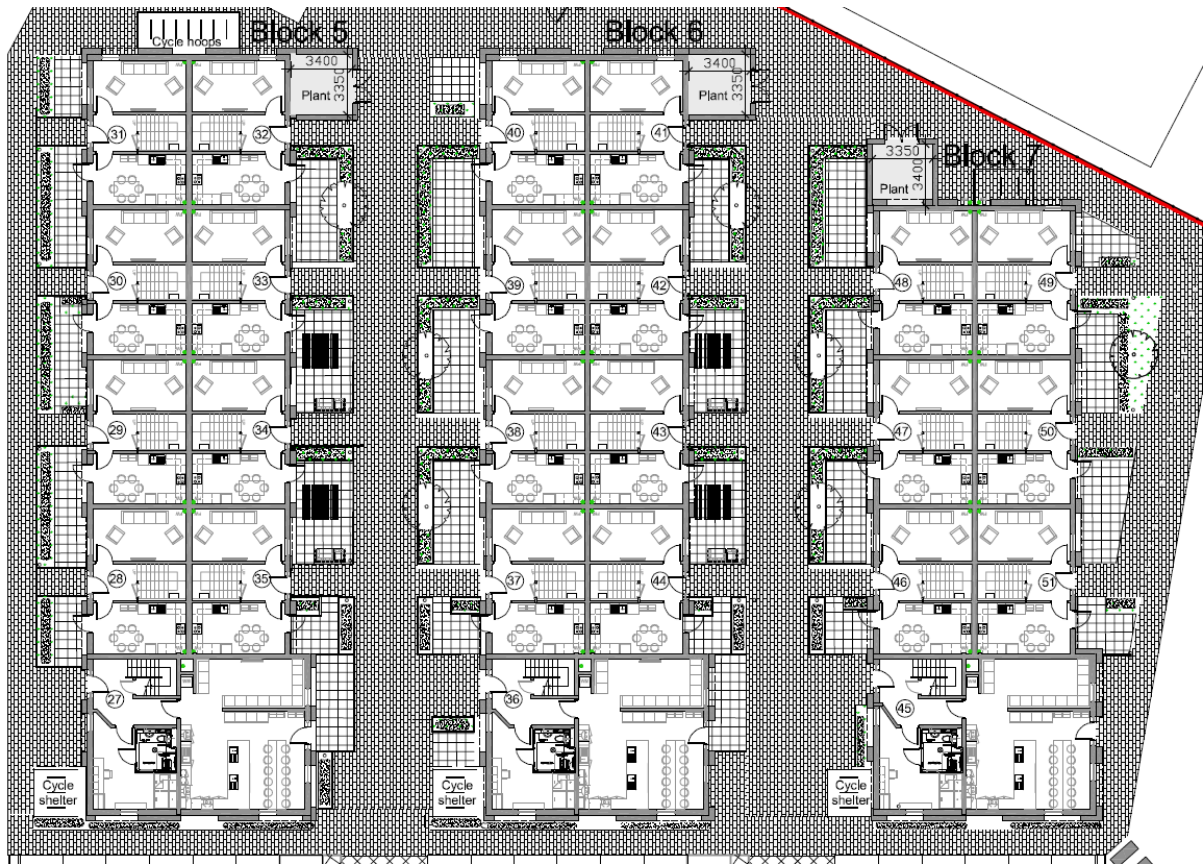


Site location plan

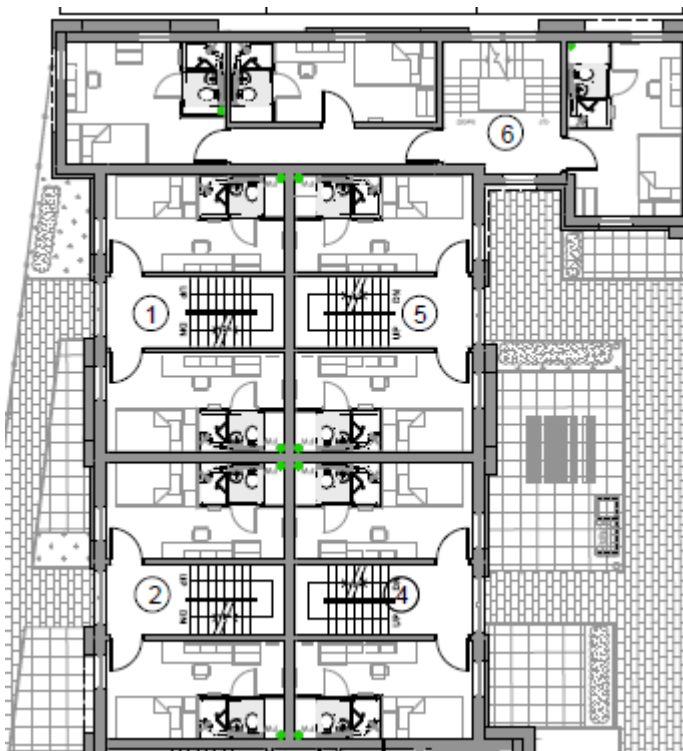




Courtyard layout (typical of blocks 1-4) with ground floor accessible unit



Courtyard layout of blocks 5-7 with ground floor accessible units



Example of accommodation to first, second and third floors



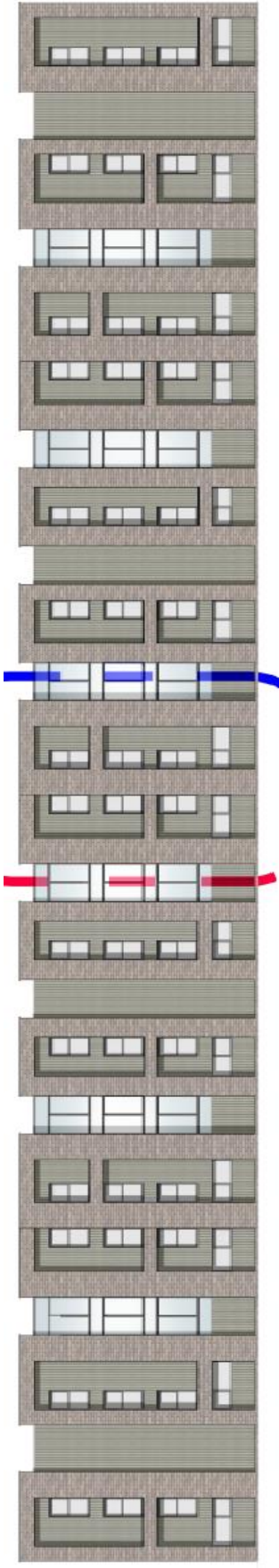
East elevation of block 4



West elevation of block 1



Typical section of south elevation of blocks 1-4



North elevation of blocks 1-4 facing B&Q



West and section of north elevation of blocks 5-6



East and section of south elevation of blocks 5-6



East and north elevation of block 7



West and south elevation of block 7

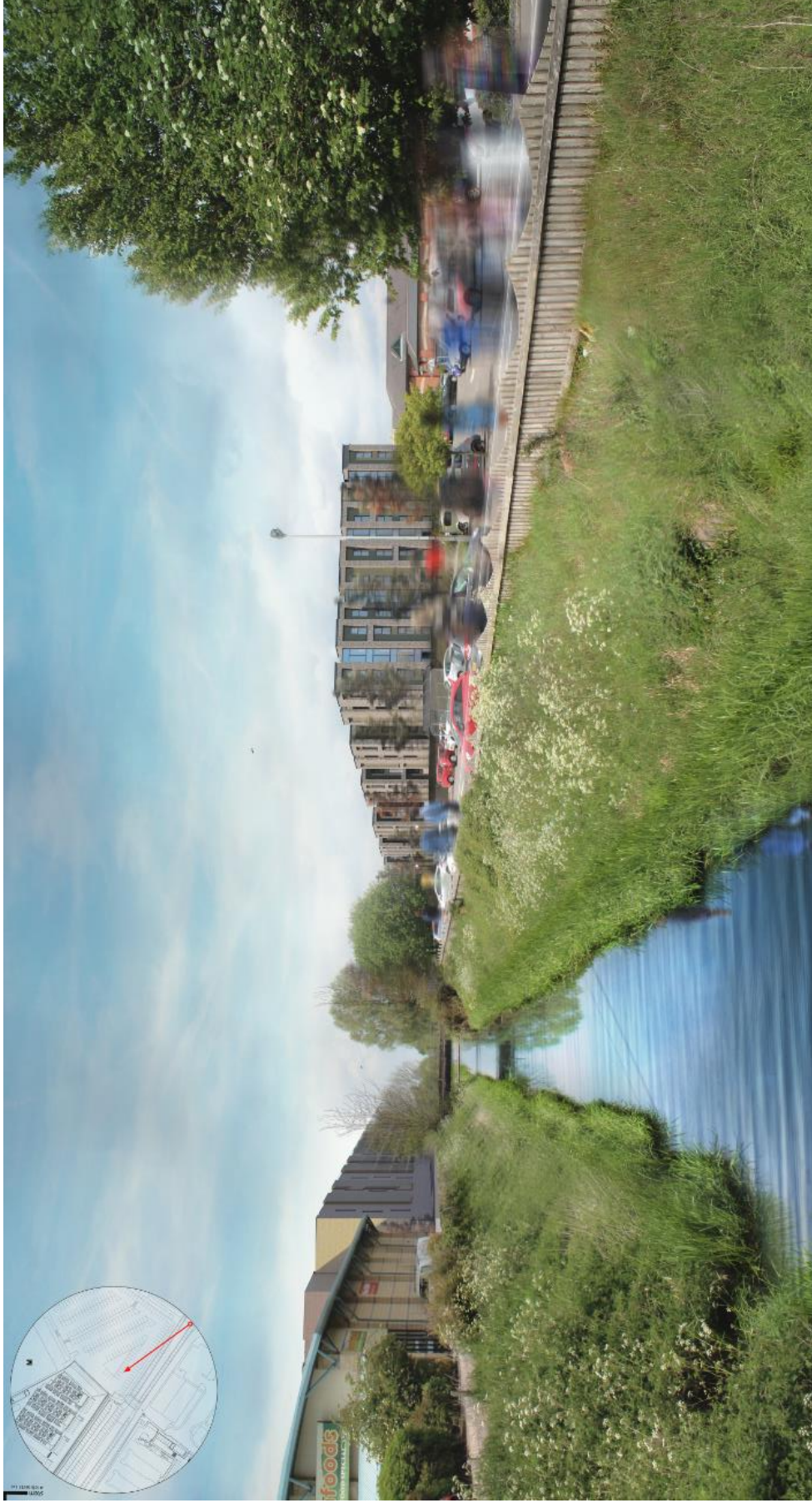


Elevations of reception/plant building





Visual from access road/entrance to site



Visual from Tritton Road to the east



Visual across Morrisons' car park



Courtyard visual



Site access



View across east section of site from access



View towards site from Morrisons' car park



View from track to the south of Coulson Drain